

OPERATION AND MAINTENANCE MANUAL

SERIES CV 2200
CHECK VALVE



AMERICAN

FLOW CONTROL

THE RIGHT WAY

INDEX



SERIES CV 2200 SWING CHECK VALVE

	PAGE
FEATURES AND BENEFITS	7D-2
SPECIFICATIONS	7D-3
ORDERING	
Dimensions:	
Standard.....	7D-4
Lever and Weight / Lever and Spring.....	7D-5
Dual Lever and Weight / Dual Lever and Spring.....	7D-6
Optional Tap Locations.....	7D-7
Weights.....	7D-8
Submittal Sheet.....	7D-9
INSTALLATION AND MAINTENANCE	7D-10
REPAIRS	
Parts Lists:	
Standard.....	7D-11, 7D-12
Lever and Weight	7D-13, 7D-14
Lever and Spring	7D-15, 7D-16
Dual Lever and Weight	7D-17, 7D-18
Dual Lever and Spring.....	7D-19, 7D-20

SERIES CV 2200 - FEATURES AND BENEFITS

FEATURES AND BENEFITS



AMERICAN Flow Control's Series CV 2200 Swing Check Valves are in full compliance with ANSI/AWWA C508 with a rated working pressure of 350 psig. Configurations are available that are UL Listed with a rated working pressure of 350 psig.

These valves are suitable for horizontal installation or vertical installation when the flow of water is in an upward direction.

BODY AND BONNET

The check valve body and bonnet are constructed of ductile iron and coated with fusion-bonded epoxy.

DISC

The disc is constructed of bronze and is available in either metal or resilient seated configurations. The resilient seated disc is equipped with a rubber seal to provide positive closure, even at low pressure.

SHAFT

The shaft is constructed of Type 316 stainless steel. In addition to the standard inside shaft configuration, an external shaft is also available for the use of a weight or spring assist for applications where rapid flow reversals may be encountered. The external shaft may be configured to exit either or both sides of the valve.

SHAFT SUPPORTS

The shaft is held in place by corrosion resistant bronze shaft supports. These supports also act as wear-resistant bearings and are easily removed for disassembly of internal parts.

DISC AND ARM ASSEMBLY

The disc and arm assembly are attached to the bonnet for ease of removal. Removing the bonnet will remove the disc and arm assembly from the check valve.

CLEAR WATERWAY

These check valves have a "Clear Waterway" per MSS SP-136. Swing check valves with a Clear Waterway, when fully open, have an unobstructed cylindrical flow path through the valve.

AMERICAN Flow Control's Series CV 2200 Swing Check Valves have these features:

- Comply with ANSI/AWWA C508
- Type 316 Stainless Steel Shaft
- Clear Waterway per MSS SP-136
- Bronze Arm
- Ductile Iron Body and Bonnet
- Metal Seated Disc or Resilient Seated Disc of Bronze Construction
- Type 316 Stainless Steel Body to Bonnet Bolting
- Available UL Listing (in applicable configurations)
- Interior and Exterior Surfaces of Body and Bonnet Coated with Fusion-Bonded Epoxy in Accordance with ANSI/AWWA C550
- Certified to NSF/ANSI/CAN 61 and 372

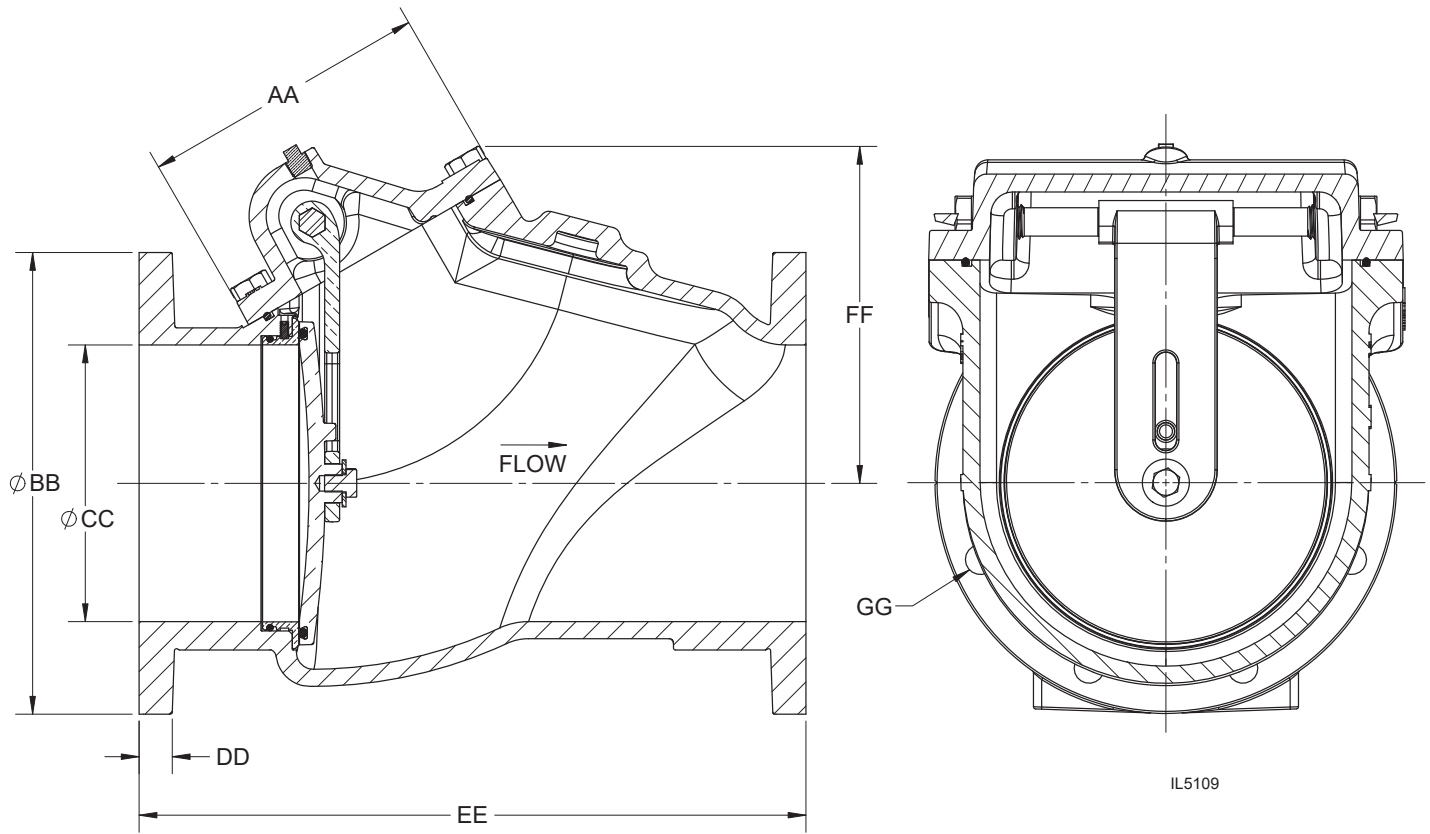
SERIES CV 2200 - FEATURES AND BENEFITS SPECIFICATIONS



Swing check valves shall be AMERICAN Flow Control's Series CV 2200. Check valves shall be manufactured from ductile iron meeting or exceeding ASTM A536. Check valves shall comply with ANSI/AWWA C508, latest revision, be UL Listed and include the following features:

- Check valves shall be designed with clear waterway opening per MSS SP-136.
- Check valves shall be rated to 350 psig and tested to 700 psig.
- Check valve disc and arm assembly shall be attached to the bonnet and be removable from the check valve body without having to remove the check valve from the pipeline.
- All body to bonnet fasteners shall be Type 316 stainless steel and be provided with hexagonal heads with dimensions conforming to ANSI B18.2.1 Metric size and/or socket head cap screws, or bolts, are not allowed.
- Disassembly of valve internals shall require no special tools other than standard socket wrenches.
- Check valve bodies and bonnets shall be coated with fusion-bonded epoxy in accordance with ANSI/AWWA C550.
- Check valve disc and arm assembly shall be assembled to the bonnet using corrosion resistant shaft supports to reduce wear and increase service life.
- The arm shall be constructed of high-strength bronze.
- The shaft shall be constructed of Type 316 stainless steel.
- The disc and seat ring shall be constructed of bronze. The resilient disc shall be equipped with a nitrile rubber seal recessed into the disc face to provide a positive seal against the seat ring.
- In applications where slam surge may occur, outside lever and weight or spring shall be available.
- The valve (all sizes) shall be constructed with lifting lugs to facilitate installation and field servicing.

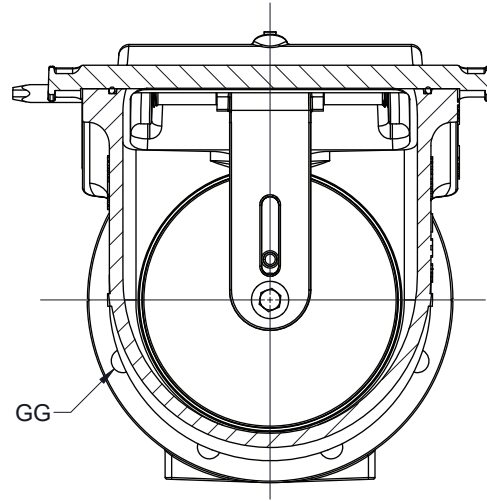
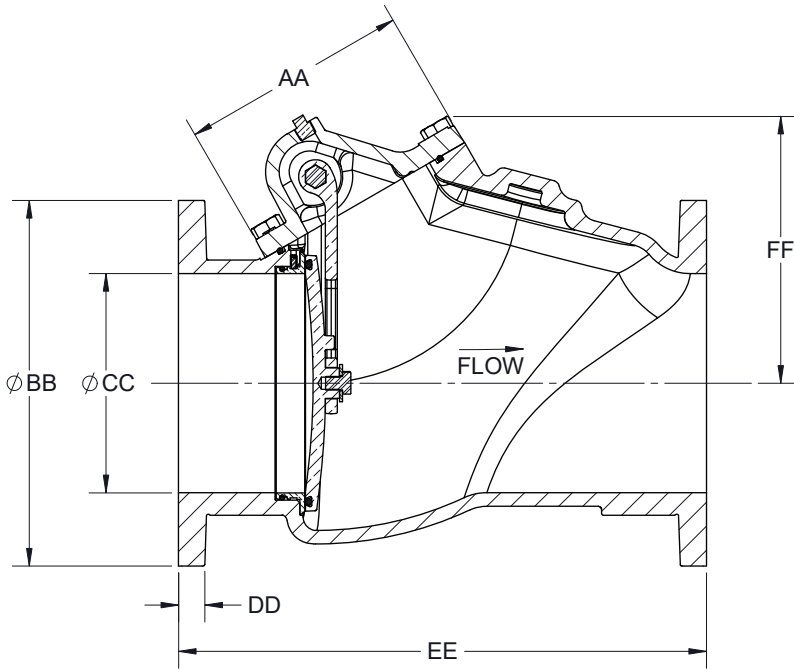
**SERIES CV 2200 - STANDARD DIMENSIONS
(CV 2200R RESILIENT SEATED DISC SHOWN)**



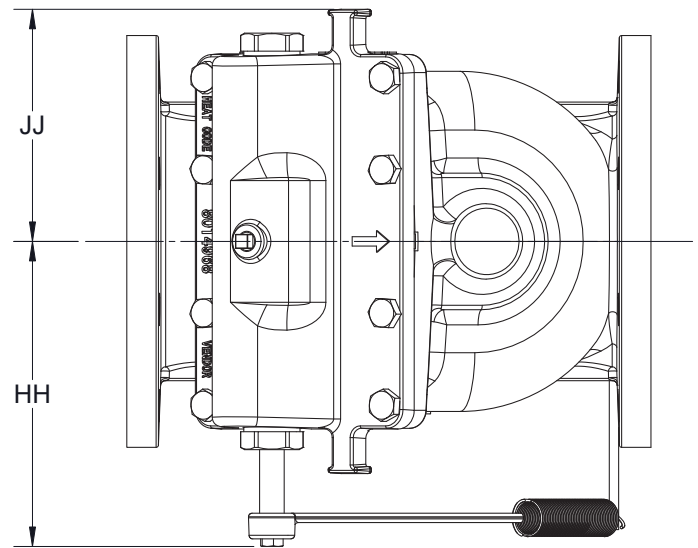
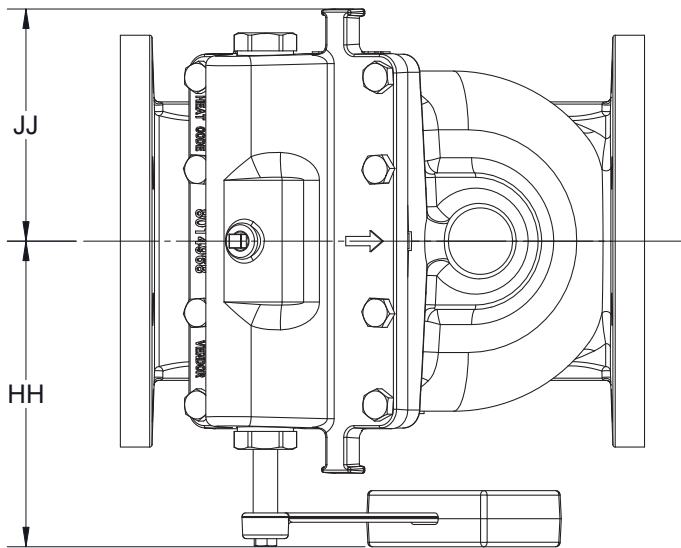
Valve Size	AA	BB	CC	DD	EE	FF	GG		
							Holes	Size	Bolt Circle
3"	4.22	7.50	3.04	.75	9.50	4.44	4	.75	6.00
4"	5.29	9.00	4.10	.75	11.50	5.72	8	.75	7.50
6"	6.39	11.00	6.08	.75	14.00	7.49	8	.88	9.50
8"	8.45	13.50	8.09	.88	19.50	9.74	8	.88	11.75
10"	9.57	16.00	10.09	1.00	24.50	11.80	12	1.00	14.25
12"	10.94	19.00	12.13	1.00	27.50	13.16	12	1.00	17.00

NOTE: CV 2200M metal seated configuration dimensions same as above.

**SERIES CV 2200 - LEVER AND WEIGHT/LEVER AND SPRING DIMENSIONS
(RIGHT-HAND OUTSIDE SHAFT, RESILIENT SEATED DISC SHOWN)**



IL5113

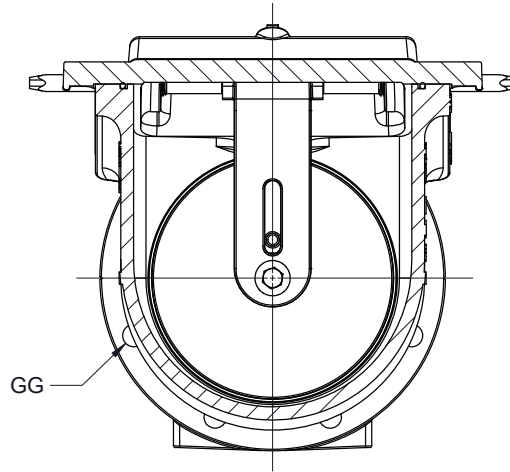
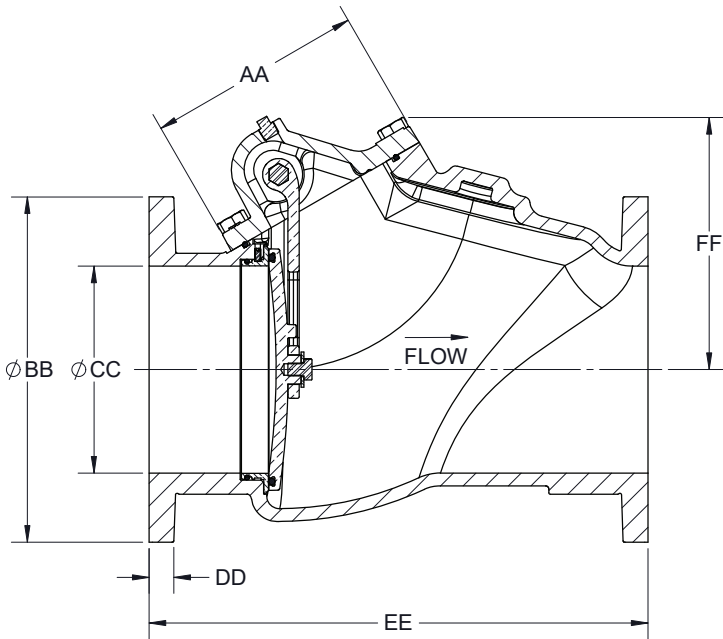


IL5148

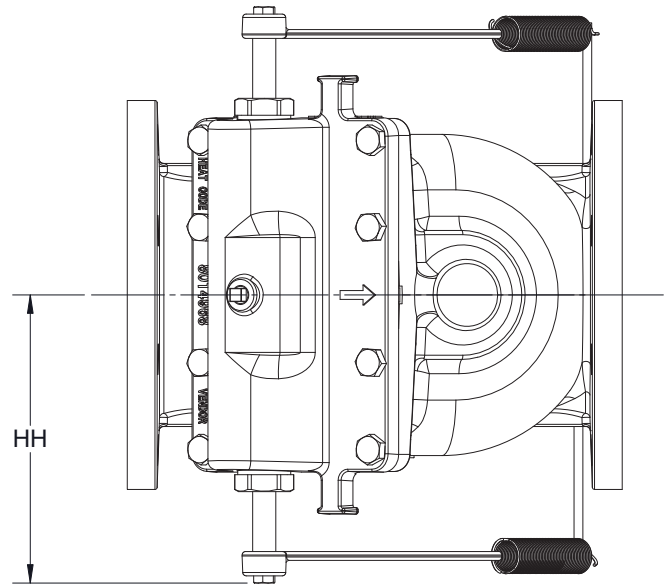
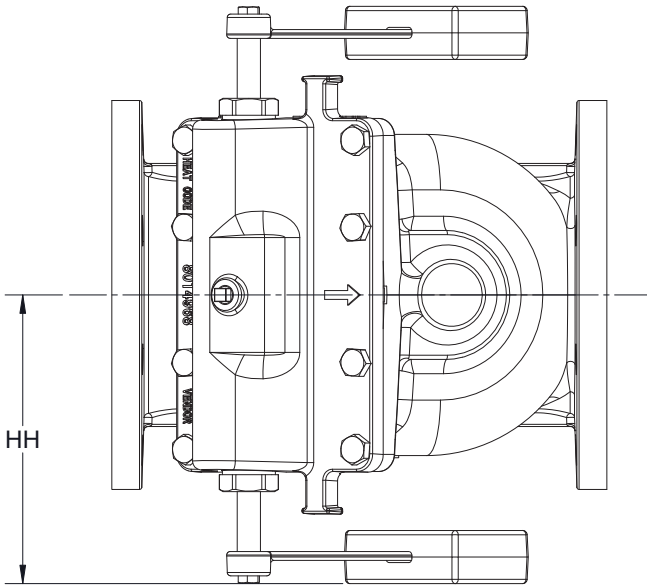
Valve Size	AA	BB	CC	DD	EE	FF	GG			HH	JJ
							Holes	Size	Bolt Circle		
3"	4.22	7.50	3.04	.75	9.50	4.44	4	.75	6.00	5.41	3.65
4"	5.29	9.00	4.10	.75	11.50	5.72	8	.75	7.50	6.54	4.20
6"	6.39	11.00	6.08	.75	14.00	7.49	8	.88	9.50	8.15	6.20
8"	8.45	13.50	8.09	.88	19.50	9.74	8	.88	11.75	9.77	8.20
10"	9.57	16.00	10.09	1.00	24.50	11.80	12	1.00	14.25	10.77	9.46
12"	10.94	19.00	12.13	1.00	27.50	13.16	12	1.00	17.00	12.27	11.13

NOTE: CV 2200M metal seated configuration dimensions same as above.

**SERIES CV 2200 - DUAL LEVER AND WEIGHT / DUAL LEVER AND SPRING DIMENSIONS
(RESILIENT SEATED DISC SHOWN)**



IL5121

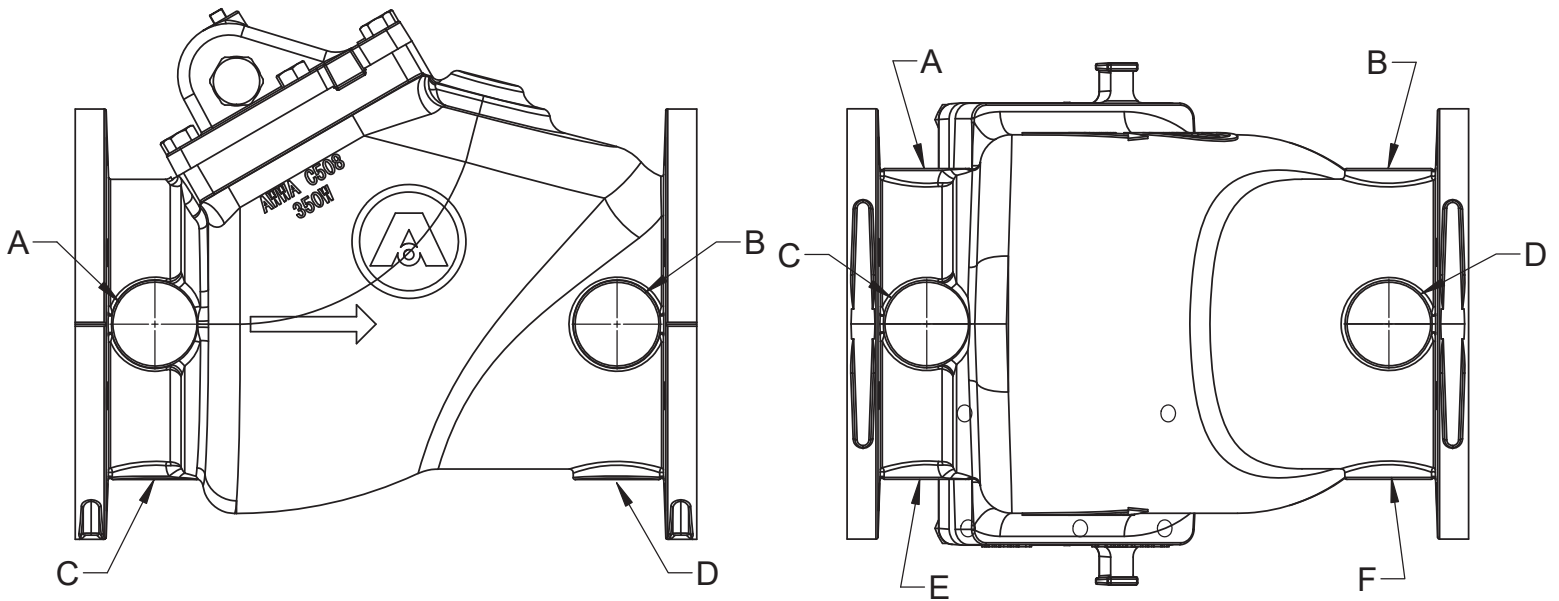


IL5148

Valve Size	AA	BB	CC	DD	EE	FF	GG			HH
							Holes	Size	Bolt Circle	
3"	4.22	7.50	3.04	.75	9.50	4.44	4	.75	6.00	5.41
4"	5.29	9.00	4.10	.75	11.50	5.72	8	.75	7.50	6.54
6"	6.39	11.00	6.08	.75	14.00	7.49	8	.88	9.50	8.15
8"	8.45	13.50	8.09	.88	19.50	9.74	8	.88	11.75	9.77
10"	9.57	16.00	10.09	1.00	24.50	11.80	12	1.00	14.25	10.77
12"	10.94	19.00	12.13	1.00	27.50	13.16	12	1.00	17.00	12.27

NOTE: CV 2200M metal seated configuration dimensions same as above.

SERIES CV 2200 - OPTIONAL TAP LOCATIONS



IL5109

Valve Size	Maximum Tap Size for Bosses	
	A,C,E	B,D,F
3"	1/2 NPT	1/2 NPT
4"	3/4 NPT	3/4 NPT
6"	1/2 NPT	1-1/4 NPT
8"	1-1/2 NPT	1-1/2 NPT
10"	2 NPT	2 NPT
12"	2 NPT	2 NPT

SERIES CV 2200 - WEIGHTS



Valve Size	Standard	Lever and Weight	Lever and Spring	Dual Lever and Weight	Dual Lever and Spring
3"	30	36	31	41	32
4"	54	60	55	65	56
6"	93	99	95	105	96
8"	190	196	192	203	195
10"	301	308	304	315	307
12"	448	455	452	462	455

NOTE: All weights are in pounds.

AMERICAN Flow Control® SERIES CV 2200 SWING CHECK VALVE



SUBMITTAL SHEET

QTY	3"	4"	6"	8"	10"	12"
<p>Type (Check One)</p> <p><input type="checkbox"/> Standard (UL Listed)</p> <p><input type="checkbox"/> Lever and Weight*</p> <p><input type="checkbox"/> Lever and Spring*</p> <p>*AWWA Only</p> <p style="text-align: right;">Also Specify Lever Side of Valve (As Viewed Looking at Upstream Valve Inlet)</p> <p><input type="checkbox"/> Left Side</p> <p><input type="checkbox"/> Right Side</p> <p><input type="checkbox"/> Dual</p>						
<p>Disc (Check One)</p> <p><input type="checkbox"/> Metal Seated Disc</p> <p><input type="checkbox"/> Resilient Seated Disc</p>				<p>Optional Body Tap:</p> <p>Size _____</p> <p>Location _____</p>		
<p>Other Requirements (List):</p>						

AMERICAN Flow Control
 American-Darling Valve and Waterous
 A Division of AMERICAN

NOTES:

1. Meets or exceeds requirements of ANSI/AWWA C508.
2. Listed by UL LLC as conforming to UL 312.
3. 350 psig AWWA and UL rated working pressure.
4. Interior and exterior surfaces of body and bonnet coated with fusion-bonded epoxy in accordance with ANSI/AWWA C550.
5. Certified to NSF/ANSI/CAN 61 and 372.
6. Clear waterway per MSS SP-136.



INSPECTION ON DELIVERY

When shipment arrives, check for shortages, breakage, external damage, etc. Note all such claims on delivery ticket.

Any damage or shortage should be reported immediately to the truck driver, noted on the bill of lading, and signed by the driver on your copy.

Carefully unload all valves - **DO NOT DROP.**

STORAGE

Valves are normally palletized when shipped which helps provide protection from weather during storage. If the pallet is disbanded and valves removed, remaining valves should be stored in an upright position with bulk-head flange on top or stored protected from the weather.

INSPECTION

Make sure the valve end flange gasket surfaces are clean and free of damage.

Clean inside of the valve to remove all contaminants that may affect water system purity. Check clapper O-ring if equipped or metal finish for damage. Check for free movement of clapper and seal fit.

INSTALLATION

Handle the valve carefully, check cover bolts for tightness. Ensure that the disc swings freely from closed to open and back again.

Be sure that the piping is properly supported to avoid stress on the valve. Make sure that the piping is properly aligned and spaced so the bolting of the valve in the line is not used to correct any errors in piping alignment or spacing.

Install valve with direction of flow arrows pointing in the direction the water will be flowing. Water flow must be horizontal or vertically upward through valve waterway. **DO NOT INSTALL CHECK VALVES IN A VERTICAL LINE WITH DOWNWARD FLOW.**

To reduce check valve slamming, the valves supplied with the optional outside shaft configuration may be equipped with either a lever and weight or a lever and spring option. The principle behind these options is to close the check valve before the fluid establishes a reverse flow. The amount of closing torque required will vary with each system and can be adjusted by moving the weight on a lever and weight configuration or switching to a dual lever and weight or dual lever and spring configuration.

Check valves should be installed in accordance with Standard Practice MSS SP-92.

MAINTENANCE

Normally there is no maintenance required on the check valve. If the valve begins to operate improperly, it may be necessary to remove the bonnet and inspect the internal disc and arm mechanism.

On check valves equipped with an outside shaft, check shaft O-rings (REF 18) for excessive wear, if leaking or worn, replace O-rings.

Remove any debris that may be hung up in the valve and ensure that all moving parts operate freely before reassembling the valve. Repair or replace parts as necessary to return the valve to good working order.

GENERAL NOTES

These reference materials are available and should be helpful in the installation and testing of Swing Check Valves:

- ANSI/AWWA C508 - Swing Check Valves for Waterworks Service.

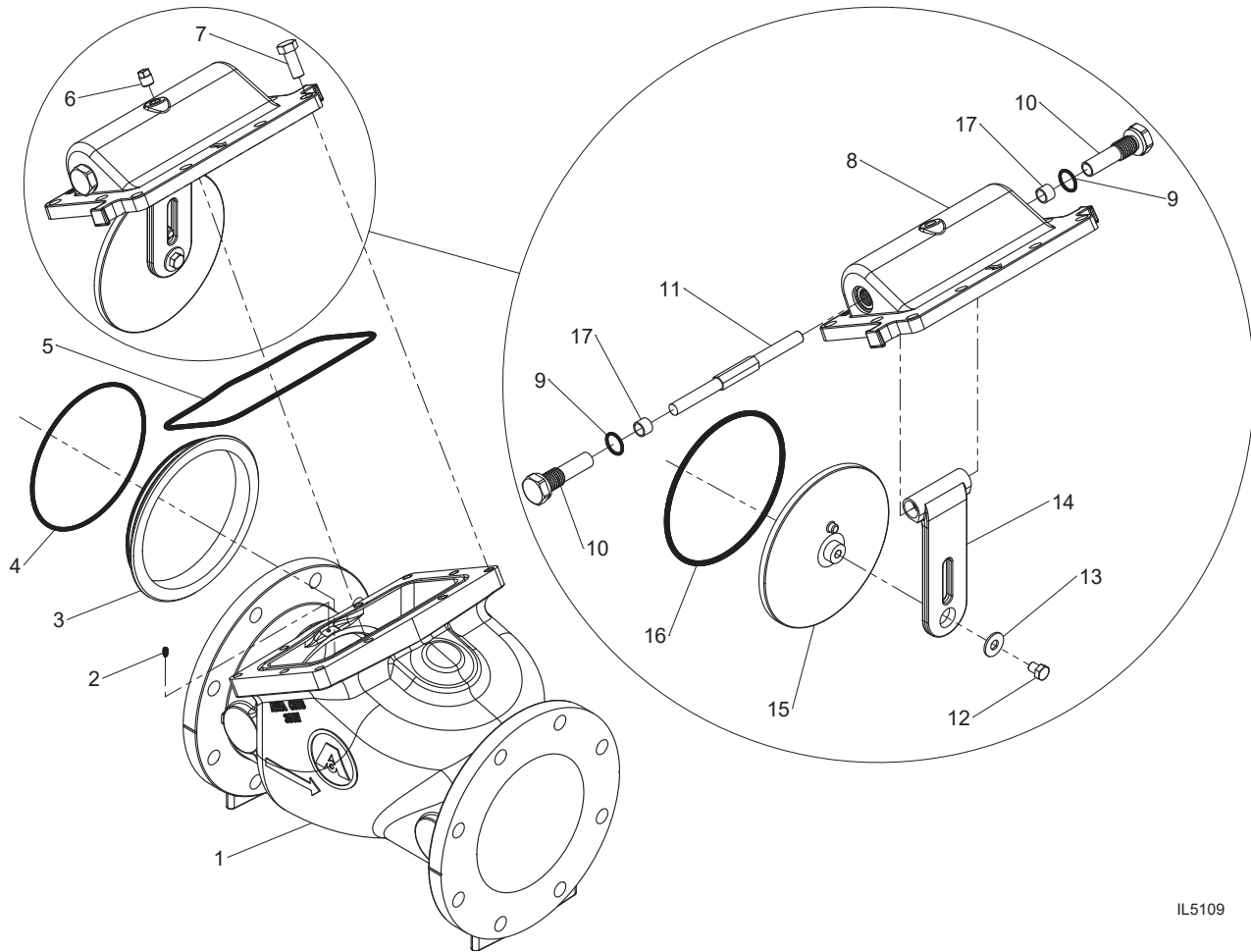
All installation, operation, and maintenance instructions are issued by the manufacturer of the pipe and the valves.

- Valve user guide as published by MSS.
- NFPA-24 - Installation of Private Fire Service Mains and Their Appurtenances.

These industry practices have been listed to help you make a safe and acceptable installation of a swing check valve.

WARNING: Special care should be taken in the installation, inspection and repair of pressure containing devices such as valves and hydrants. FAILURE TO FOLLOW PROPER PRACTICE AND GUIDELINES CAN RESULT IN SERIOUS INJURY OR DEATH. Do not make repairs while check valve is under pressure.

SERIES CV 2200 - STANDARD PARTS LIST
CV 2200R RESILIENT SEATED DISC, 3" - 12" SIZES

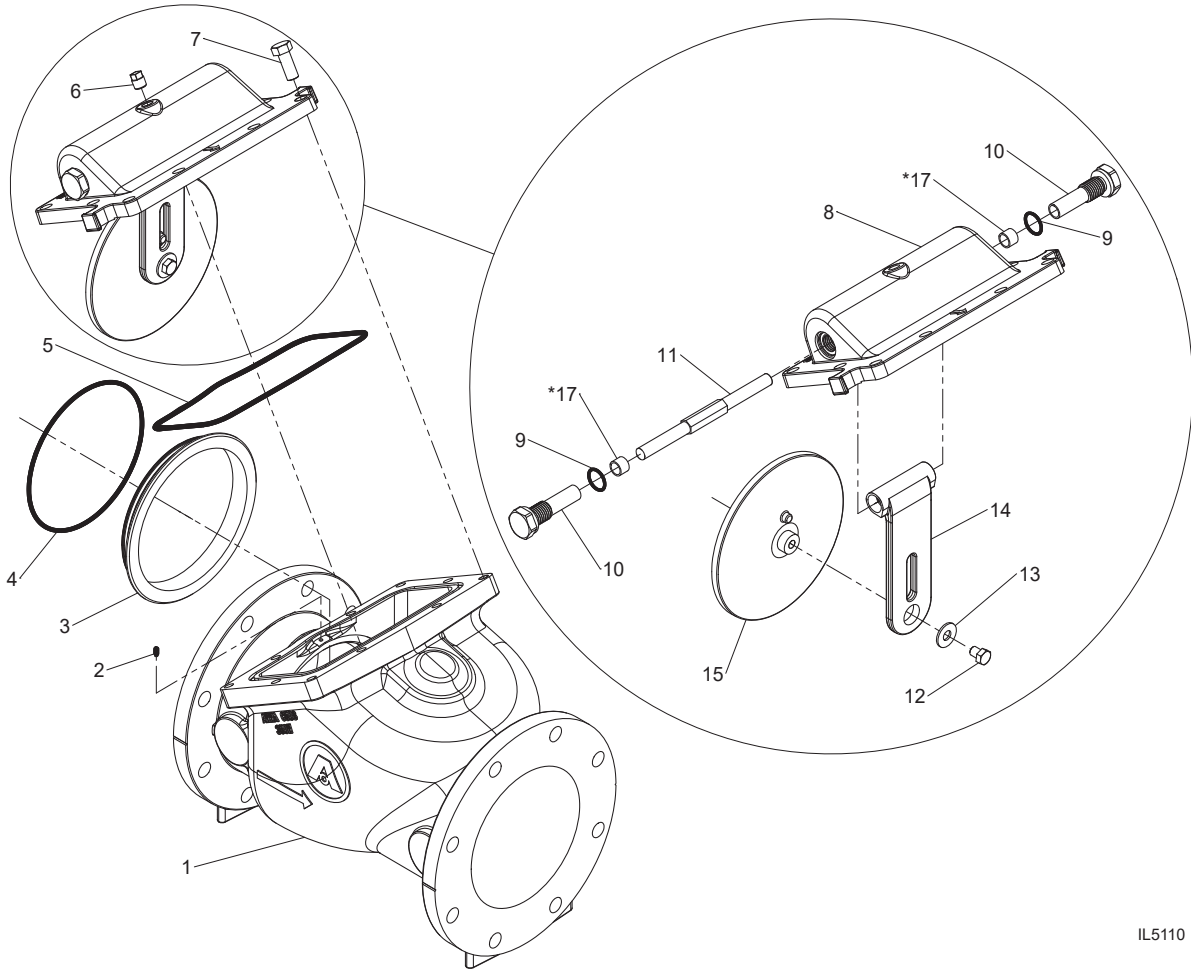


IL5109

Ref No.	Description	Material
1	Body	Ductile Iron, ASTM A536
2	Set Screw	316 Stainless Steel
3	Seat Ring	Silicon Bronze, ASTM B584, UNS C87600
4	O-ring	Nitrile Rubber
5	Bonnet Gasket	Nitrile Rubber
6	Pipe Plug	Brass
7	Hex Head Bolt	316 Stainless Steel
8	Bonnet	Ductile Iron, ASTM A536
9	O-ring	Nitrile Rubber
10	Shaft Support, Closed	Brass, ASTM B16/B16M
11	Inside Shaft	316 Stainless Steel
12	Hex Head Bolt	316 Stainless Steel
13	Washer	316 Stainless Steel
14	Arm	Silicon Bronze, ASTM B584, UNS C87600
15	Disc, Resilient-Seated	Silicon Bronze, ASTM B584, UNS C87600
16	O-ring	Nitrile Rubber
*17	Bushing	Brass, ASTM B16/B16M

*Used on 8" & 12" check valve sizes only.

SERIES CV 2200 - STANDARD PARTS LIST
CV 2200M METAL SEATED DISC, 3" - 12" SIZES

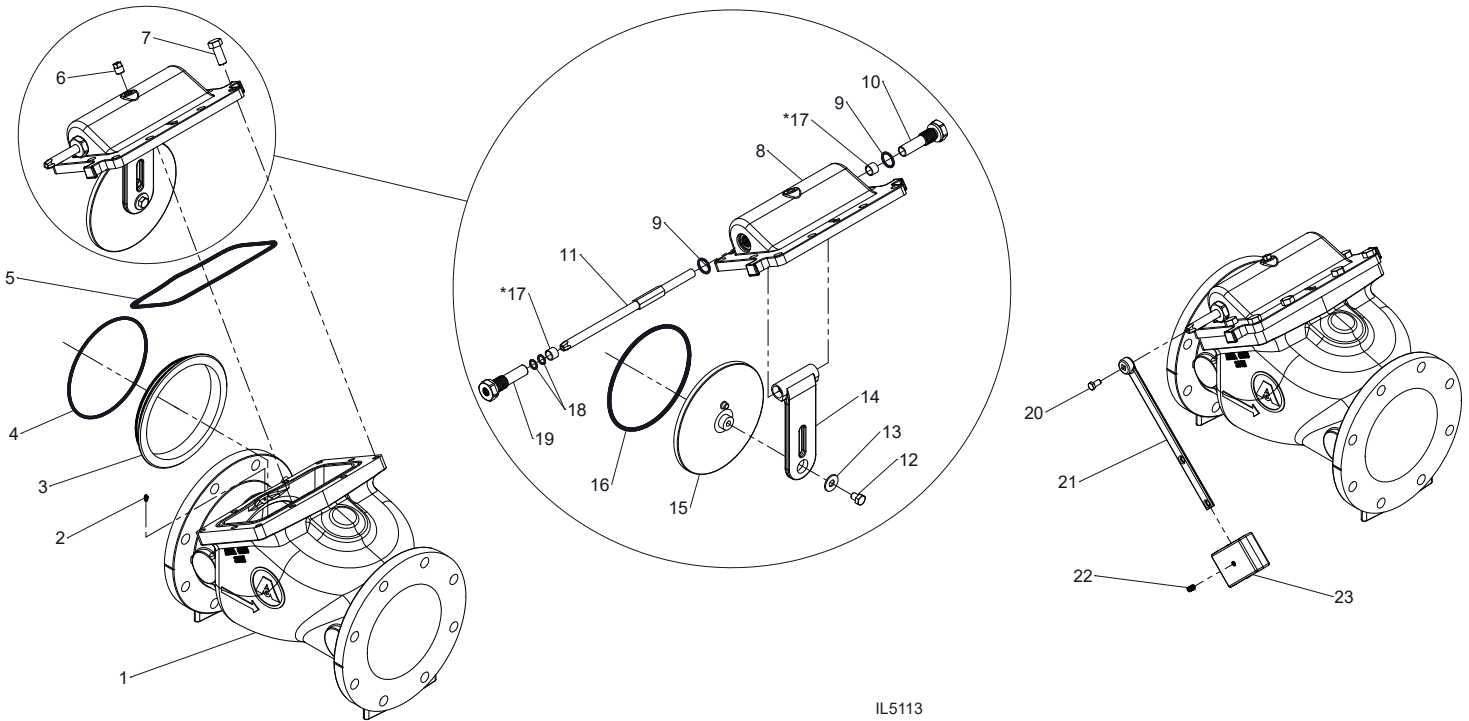


IL5110

Ref No.	Description	Material
1	Body	Ductile Iron, ASTM A536
2	Set Screw	316 Stainless Steel
3	Seat Ring	Silicon Bronze, ASTM B584, UNS C87600
4	O-ring	Nitrile Rubber
5	Bonnet Gasket	Nitrile Rubber
6	Pipe Plug	Brass
7	Hex Head Bolt	316 Stainless Steel
8	Bonnet	Ductile Iron, ASTM A536
9	O-ring	Nitrile Rubber
10	Shaft Support, Closed	Brass, ASTM B16/B16M
11	Inside Shaft	316 Stainless Steel
12	Hex Head Bolt	316 Stainless Steel
13	Washer	316 Stainless Steel
14	Arm	Silicon Bronze, ASTM B584, UNS C87600
15	Disc, Metal-Seated	Silicon Bronze, ASTM B584, UNS C87600
*17	Bushing	Brass, ASTM B16/B16M

*Used on 8" & 12" check valve sizes only.

SERIES CV 2200 - LEVER AND WEIGHT PARTS LIST
CV 2200R RESILIENT SEATED DISC, 3" - 12" SIZES

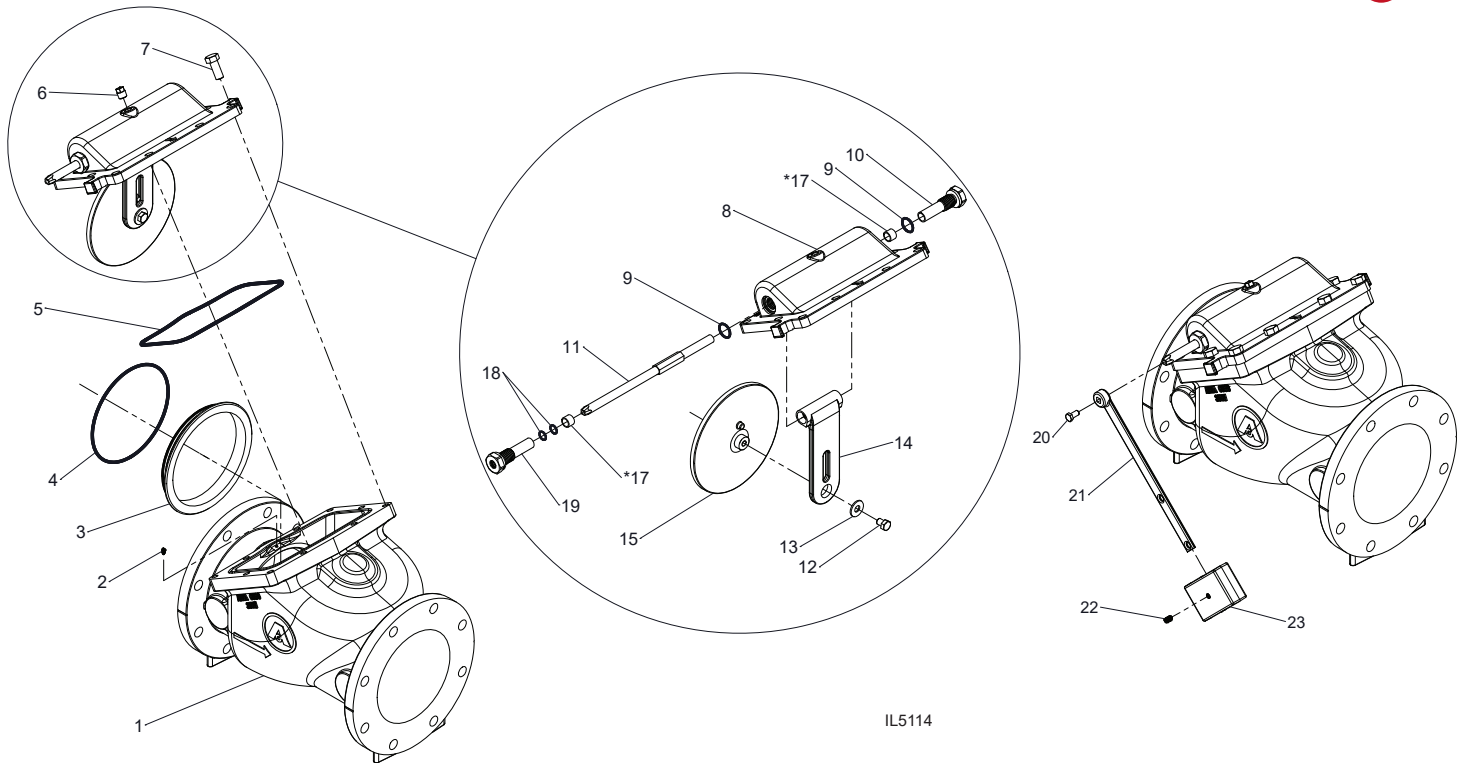


IL5113

Ref No.	Description	Material
1	Body	Ductile Iron, ASTM A536
2	Set Screw	316 Stainless Steel
3	Seat Ring	Silicon Bronze, ASTM B584, UNS C87600
4	O-ring	Nitrile Rubber
5	Bonnet Gasket	Nitrile Rubber
6	Pipe Plug	Brass
7	Hex Head Bolt	316 Stainless Steel
8	Bonnet	Ductile Iron, ASTM A536
9	O-ring	Nitrile Rubber
10	Shaft Support, Closed	Brass, ASTM B16/B16M
11	Single Shaft	316 Stainless Steel
12	Hex Head Bolt	316 Stainless Steel
13	Washer	316 Stainless Steel
14	Arm	Silicon Bronze, ASTM B584, UNS C87600
15	Disc, Resilient-Seated	Silicon Bronze, ASTM B584, UNS C87600
16	O-ring	Nitrile Rubber
*17	Bushing	Brass, ASTM B16/B16M
18	O-ring	Nitrile Rubber
19	Shaft Support, Open	Brass, ASTM B16/B16M
20	Hex Head Bolt	316 Stainless Steel
21	Lever	Silicon Bronze, ASTM B584, UNS C87600
22	Set Screw	316 Stainless Steel
23	Weight	Cast Iron, ASTM A126

*Used on 8" & 12" check valve sizes only.

SERIES CV 2200 - LEVER AND WEIGHT PARTS LIST
CV 2200M METAL SEATED DISC, 3" - 12" SIZES

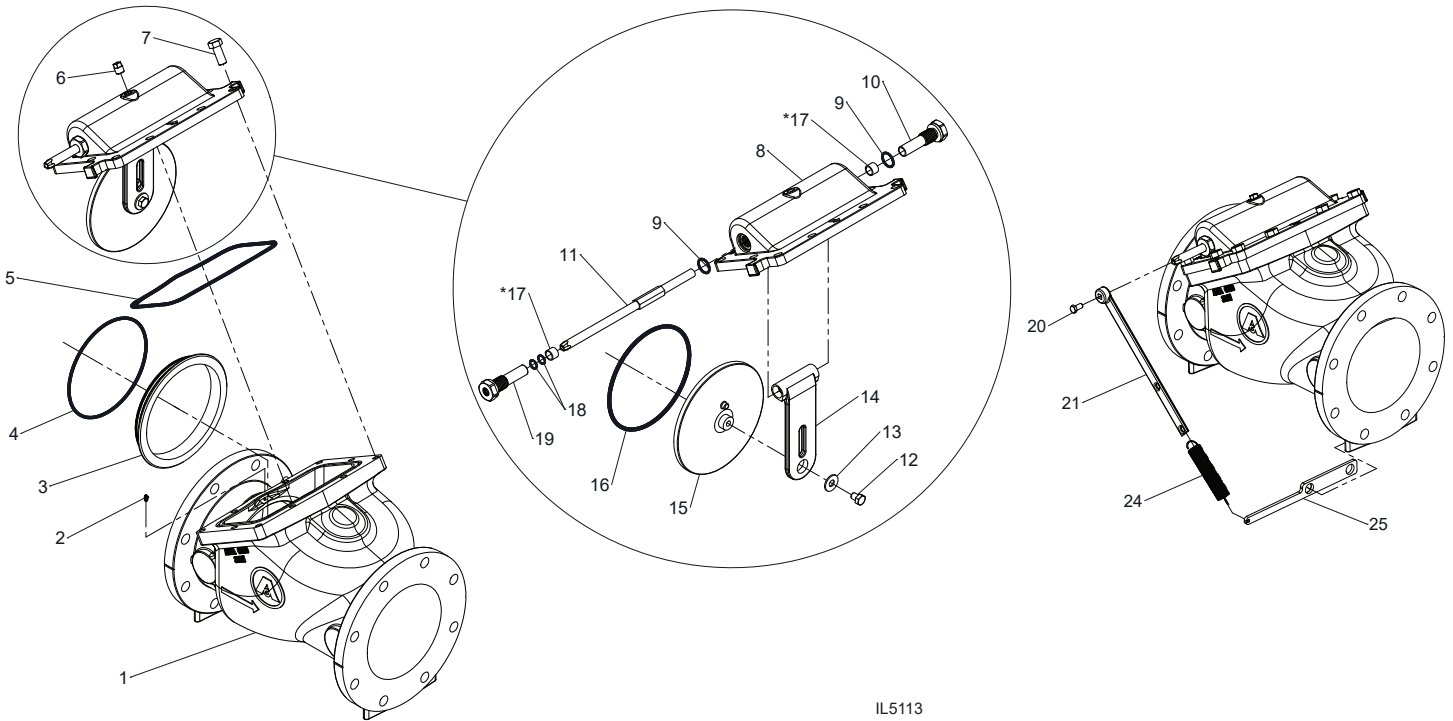


IL5114

Ref No.	Description	Material
1	Body	Ductile Iron, ASTM A536
2	Set Screw	316 Stainless Steel
3	Seat Ring	Silicon Bronze, ASTM B584, UNS C87600
4	O-ring	Nitrile Rubber
5	Bonnet Gasket	Nitrile Rubber
6	Pipe Plug	Brass
7	Hex Head Bolt	316 Stainless Steel
8	Bonnet	Ductile Iron, ASTM A536
9	O-ring	Nitrile Rubber
10	Shaft Support, Closed	Brass, ASTM B16/B16M
11	Single Shaft	316 Stainless Steel
12	Hex Head Bolt	316 Stainless Steel
13	Washer	316 Stainless Steel
14	Arm	Silicon Bronze, ASTM B584, UNS C87600
15	Disc, Metal-Seated	Silicon Bronze, ASTM B584, UNS C87600
*17	Bushing	Brass, ASTM B16/B16M
18	O-ring	Nitrile Rubber
19	Shaft Support, Open	Brass, ASTM B16/B16M
20	Hex Head Bolt	316 Stainless Steel
21	Lever	Silicon Bronze, ASTM B584, UNS C87600
22	Set Screw	316 Stainless Steel
23	Weight	Cast Iron, ASTM A126

*Used on 8" & 12" check valve sizes only.

SERIES CV 2200 - LEVER AND SPRING PARTS LIST
CV 2200R RESILIENT SEATED DISC, 3" - 12" SIZES

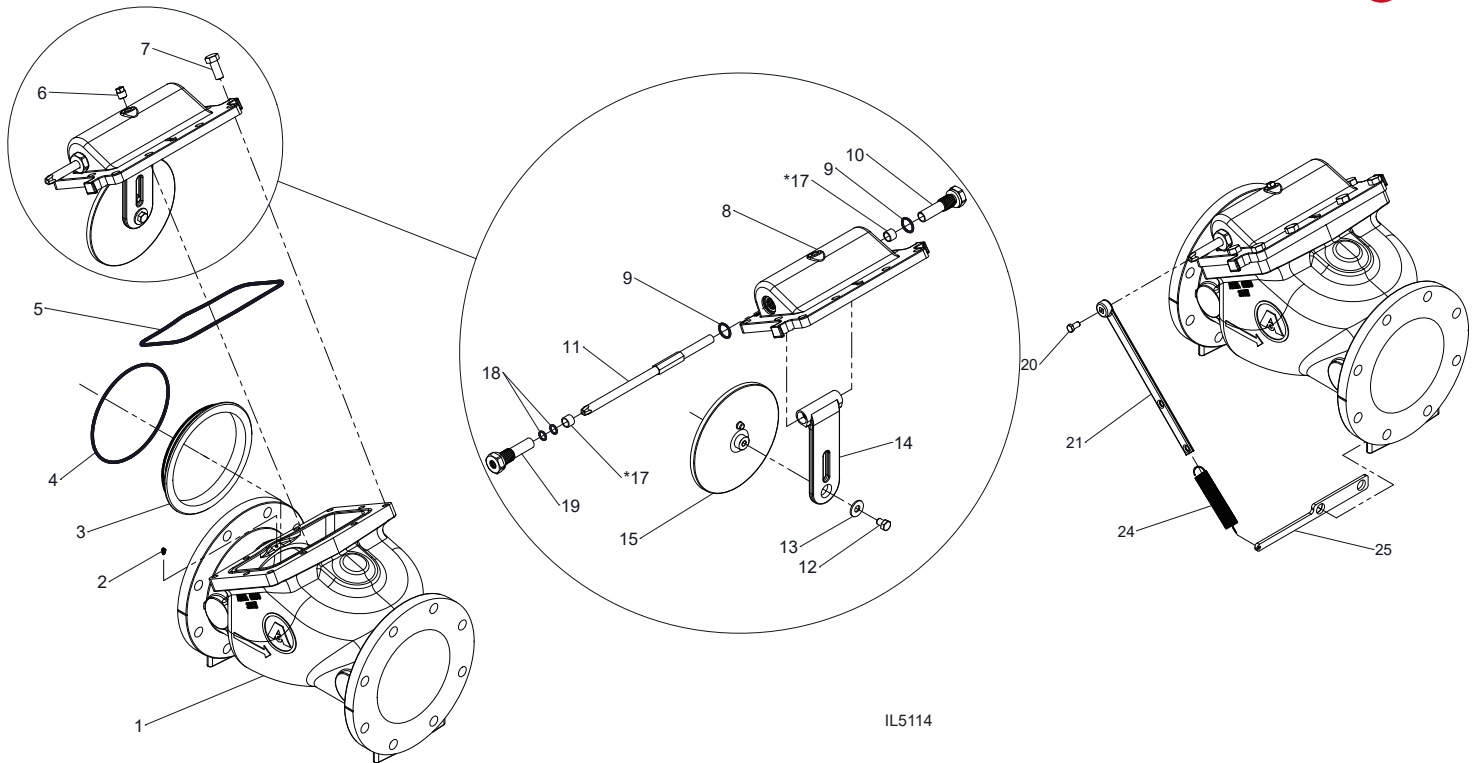


IL5113

Ref No.	Description	Material
1	Body	Ductile Iron, ASTM A536
2	Set Screw	316 Stainless Steel
3	Seat Ring	Silicon Bronze, ASTM B584, UNS C87600
4	O-ring	Nitrile Rubber
5	Bonnet Gasket	Nitrile Rubber
6	Pipe Plug	Brass
7	Hex Head Bolt	316 Stainless Steel
8	Bonnet	Ductile Iron, ASTM A536
9	O-ring	Nitrile Rubber
10	Shaft Support, Closed	Brass, ASTM B16/B16M
11	Single Shaft	316 Stainless Steel
12	Hex Head Bolt	316 Stainless Steel
13	Washer	316 Stainless Steel
14	Arm	Silicon Bronze, ASTM B584, UNS C87600
15	Disc, Resilient-Seated	Silicon Bronze, ASTM B584, UNS C87600
16	O-ring	Nitrile Rubber
*17	Bushing	Brass, ASTM B16/B16M
18	O-ring	Nitrile Rubber
19	Shaft Support, Open	Brass, ASTM B16/B16M
20	Hex Head Bolt	316 Stainless Steel
21	Lever	Silicon Bronze, ASTM B584, UNS C87600
24	Spring	302 Stainless Steel
25	Bracket	300 Series Stainless Steel

*Used on 8" & 12" check valve sizes only.

SERIES CV 2200 - LEVER AND SPRING PARTS LIST
CV 2200M METAL SEATED DISC, 3" - 12" SIZES

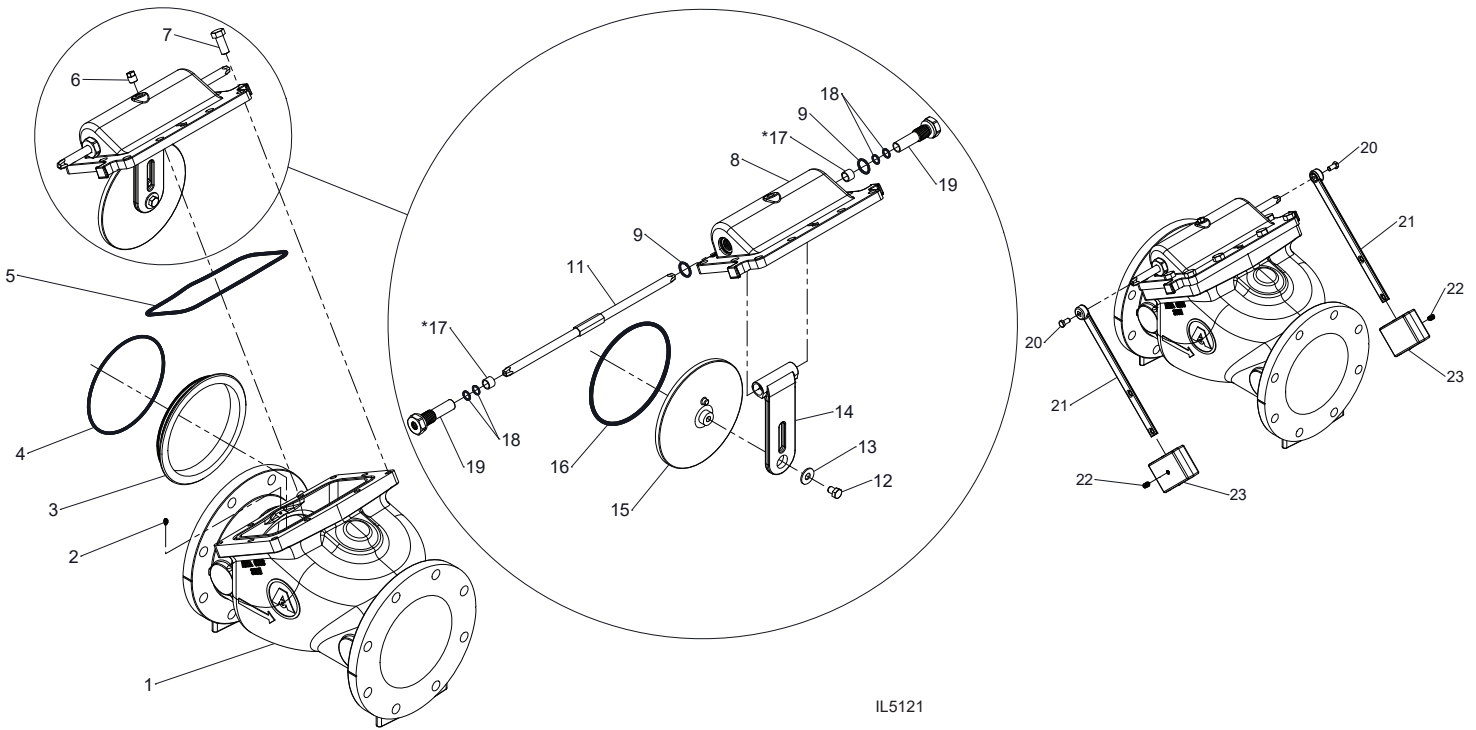


IL5114

Ref No.	Description	Material
1	Body	Ductile Iron, ASTM A536
2	Set Screw	316 Stainless Steel
3	Seat Ring	Silicon Bronze, ASTM B584, UNS C87600
4	O-ring	Nitrile Rubber
5	Bonnet Gasket	Nitrile Rubber
6	Pipe Plug	Brass
7	Hex Head Bolt	316 Stainless Steel
8	Bonnet	Ductile Iron, ASTM A536
9	O-ring	Nitrile Rubber
10	Shaft Support, Closed	Brass, ASTM B16/B16M
11	Single Shaft	316 Stainless Steel
12	Hex Head Bolt	316 Stainless Steel
13	Washer	316 Stainless Steel
14	Arm	Silicon Bronze, ASTM B584, UNS C87600
15	Disc, Metal-Seated	Silicon Bronze, ASTM B584, UNS C87600
*17	Bushing	Brass, ASTM B16/B16M
18	O-ring	Nitrile Rubber
19	Shaft Support, Open	Brass, ASTM B16/B16M
20	Hex Head Bolt	316 Stainless Steel
21	Lever	Silicon Bronze, ASTM B584, UNS C87600
24	Spring	302 Stainless Steel
25	Bracket	300 Series Stainless Steel

*Used on 8" & 12" check valve sizes only.

SERIES CV 2200 - DUAL LEVER AND WEIGHT PARTS LIST
CV 2200R RESILIENT SEATED DISC, 3" - 12" SIZES

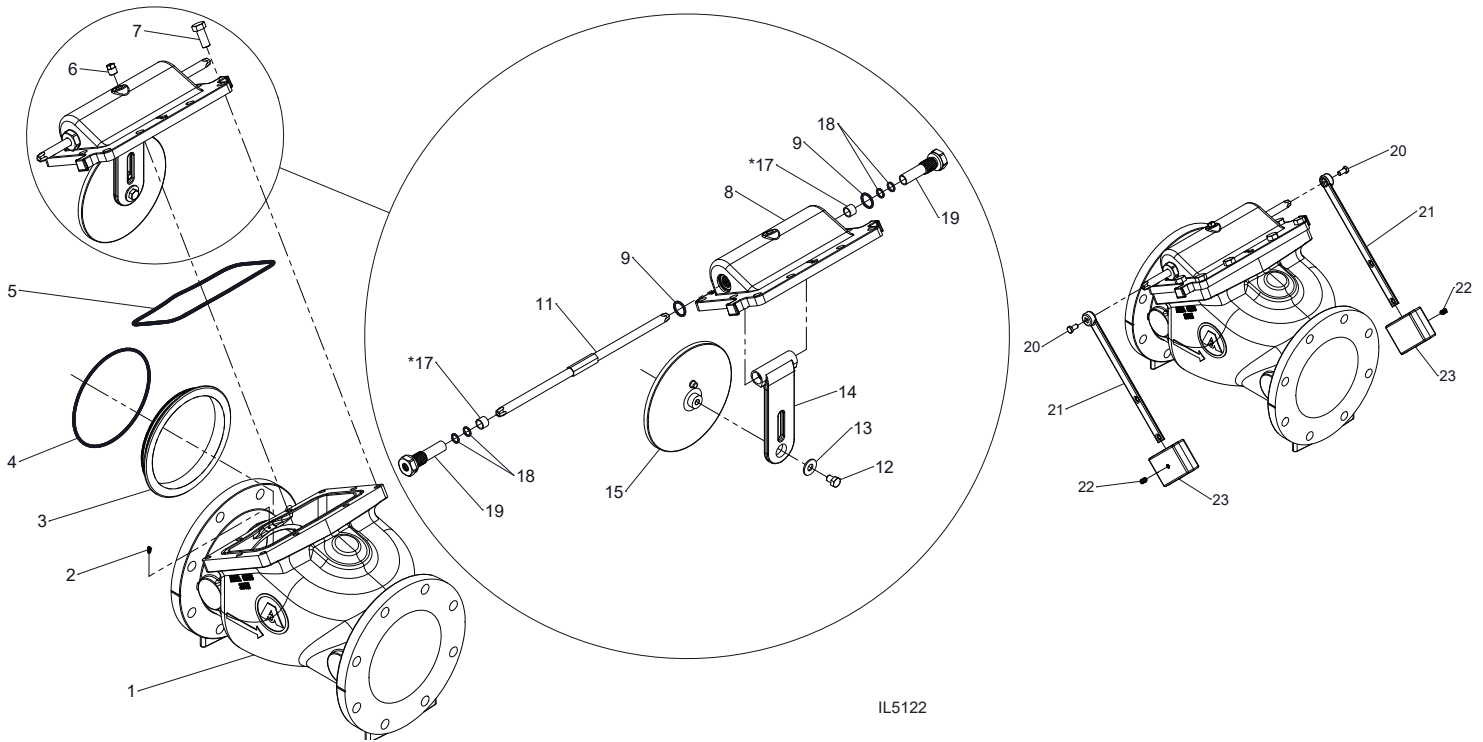


IL5121

Ref No.	Description	Material
1	Body	Ductile Iron, ASTM A536
2	Set Screw	316 Stainless Steel
3	Seat Ring	Silicon Bronze, ASTM B584, UNS C87600
4	O-ring	Nitrile Rubber
5	Bonnet Gasket	Nitrile Rubber
6	Pipe Plug	Brass
7	Hex Head Bolt	316 Stainless Steel
8	Bonnet	Ductile Iron, ASTM A536
9	O-ring	Nitrile Rubber
11	Dual Shaft	316 Stainless Steel
12	Hex Head Bolt	316 Stainless Steel
13	Washer	316 Stainless Steel
14	Arm	Silicon Bronze, ASTM B584, UNS C87600
15	Disc, Resilient-Seated	Silicon Bronze, ASTM B584, UNS C87600
16	O-ring	Nitrile Rubber
*17	Bushing	Brass, ASTM B16/B16M
18	O-ring	Nitrile Rubber
19	Shaft Support, Open	Brass, ASTM B16/B16M
20	Hex Head Bolt	316 Stainless Steel
21	Lever	Silicon Bronze, ASTM B584, UNS C87600
22	Set Screw	316 Stainless Steel
23	Weight	Cast Iron, ASTM A126

*Used on 8" & 12" check valve sizes only.

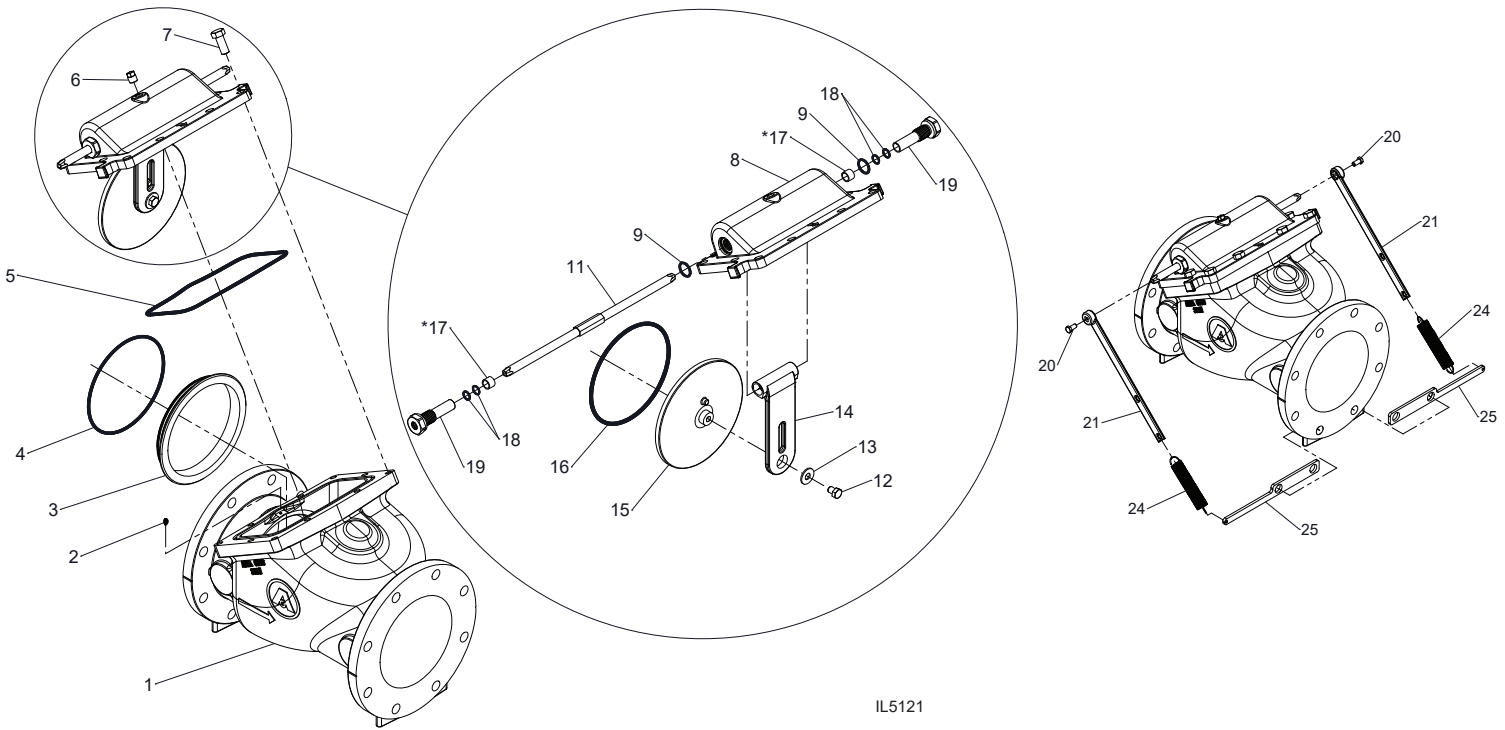
SERIES CV 2200 - DUAL LEVER AND WEIGHT PARTS LIST
CV 2200M METAL SEATED DISC, 3" - 12" SIZES



Ref No.	Description	Material
1	Body	Ductile Iron, ASTM A536
2	Set Screw	316 Stainless Steel
3	Seat Ring	Silicon Bronze, ASTM B584, UNS C87600
4	O-ring	Nitrile Rubber
5	Bonnet Gasket	Nitrile Rubber
6	Pipe Plug	Brass
7	Hex Head Bolt	316 Stainless Steel
8	Bonnet	Ductile Iron, ASTM A536
9	O-ring	Nitrile Rubber
11	Dual Shaft	316 Stainless Steel
12	Hex Head Bolt	316 Stainless Steel
13	Washer	316 Stainless Steel
14	Arm	Silicon Bronze, ASTM B584, UNS C87600
15	Disc, Metal-Seated	Silicon Bronze, ASTM B584, UNS C87600
*17	Bushing	Brass, ASTM B16/B16M
18	O-ring	Nitrile Rubber
19	Shaft Support, Open	Brass, ASTM B16/B16M
20	Hex Head Bolt	316 Stainless Steel
21	Lever	Silicon Bronze, ASTM B584, UNS C87600
22	Set Screw	316 Stainless Steel
23	Weight	Cast Iron, ASTM A126

*Used on 8" & 12" check valve sizes only.

SERIES CV 2200 - DUAL LEVER AND SPRING PARTS LIST
CV 2200R RESILIENT SEATED DISC, 3" - 12" SIZES

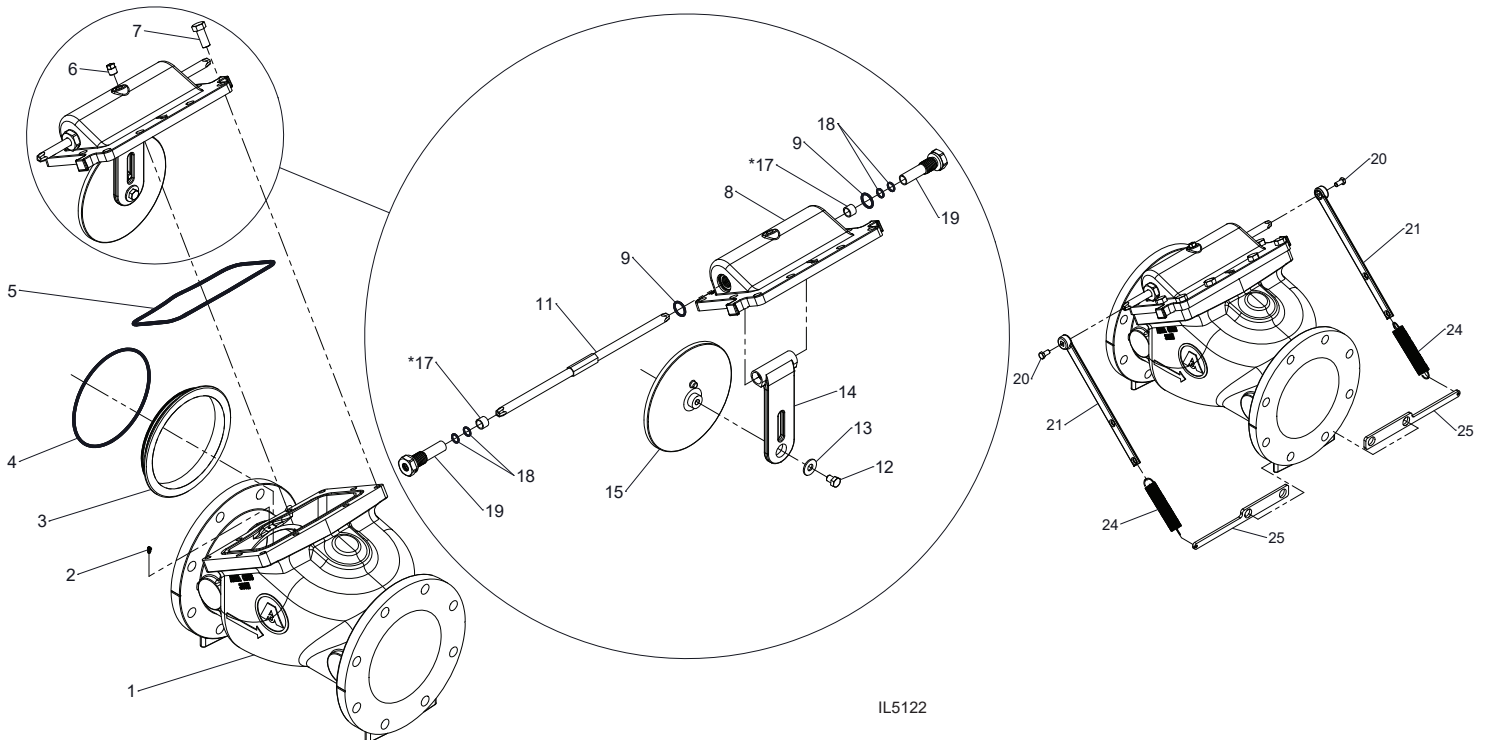


IL5121

Ref No.	Description	Material
1	Body	Ductile Iron, ASTM A536
2	Set Screw	316 Stainless Steel
3	Seat Ring	Silicon Bronze, ASTM B584, UNS C87600
4	O-ring	Nitrile Rubber
5	Bonnet Gasket	Nitrile Rubber
6	Pipe Plug	Brass
7	Hex Head Bolt	316 Stainless Steel
8	Bonnet	Ductile Iron, ASTM A536
9	O-ring	Nitrile Rubber
11	Dual Shaft	316 Stainless Steel
12	Hex Head Bolt	316 Stainless Steel
13	Washer	316 Stainless Steel
14	Arm	Silicon Bronze, ASTM B584, UNS C87600
15	Disc, Resilient-Seated	Silicon Bronze, ASTM B584, UNS C87600
16	O-ring	Nitrile Rubber
*17	Bushing	Brass, ASTM B16/B16M
18	O-ring	Nitrile Rubber
19	Shaft Support, Open	Brass, ASTM B16/B16M
20	Hex Head Bolt	316 Stainless Steel
21	Lever	Silicon Bronze, ASTM B584, UNS C87600
24	Spring	302 Stainless Steel
25	Bracket	300 Series Stainless Steel

*Used on 8" & 12" check valve sizes only.

SERIES CV 2200 - DUAL LEVER AND SPRING PARTS LIST
CV 2200M METAL SEATED DISC, 3" - 12" SIZES



IL5122

Ref No.	Description	Material
1	Body	Ductile Iron, ASTM A536
2	Set Screw	316 Stainless Steel
3	Seat Ring	Silicon Bronze, ASTM B584, UNS C87600
4	O-ring	Nitrile Rubber
5	Bonnet Gasket	Nitrile Rubber
6	Pipe Plug	Brass
7	Hex Head Bolt	316 Stainless Steel
8	Bonnet	Ductile Iron, ASTM A536
9	O-ring	Nitrile Rubber
11	Dual Shaft	316 Stainless Steel
12	Hex Head Bolt	316 Stainless Steel
13	Washer	316 Stainless Steel
14	Arm	Silicon Bronze, ASTM B584, UNS C87600
15	Disc, Metal-Seated	Silicon Bronze, ASTM B584, UNS C87600
*17	Bushing	Brass, ASTM B16/B16M
18	O-ring	Nitrile Rubber
19	Shaft Support, Open	Brass, ASTM B16/B16M
20	Hex Head Bolt	316 Stainless Steel
21	Lever	Silicon Bronze, ASTM B584, UNS C87600
24	Spring	302 Stainless Steel
25	Bracket	300 Series Stainless Steel

*Used on 8" & 12" check valve sizes only.



AMERICAN

FLOW CONTROL

THE RIGHT WAY

AMERICAN Flow Control

P.O. Box 2727
Birmingham, AL 35202-2727
Phone: 800-326-8051
Fax: 800-610-3569
Email: afcsales@american-usa.com

Waterous Company

125 Hardman Avenue South
South St. Paul, MN 55075-2421
Phone: 888-266-3686
Fax: 800-601-2809
Email: afcsales@american-usa.com

WWW.AMERICAN-USA.COM



Product literature may become outdated. AMERICAN is not responsible for out-of-date information, errors or omissions.
Product diagrams are illustrative only. Please contact AMERICAN for the most current product information.